

Jiashen Cao 7 minutes ago

@EvaDB What are some important things to learn about course waitlist?



EvaDB APP 7 minutes ago

Things to know about waitlisting include:

1. Being waitlisted for a course is not the same as being registered or enrolled in a course.
2. Waitlisting allows students to add themselves to a waitlist for a course that is closed.
3. Students on the waitlist will be notified if a seat becomes available on a "first come, first served" basis.
4. It is important to monitor your account frequently to ensure you do not miss a waitlist notification.
5. If the waitlist for a course is closed, there is a chance that spots may become available later as students remove themselves from the waitlist.
6. The chances of enrolling in a class if you are waitlisted or if the class is closed may vary and cannot be guaranteed.
7. Towards the end of Phase II registration, waitlists may be removed, and another opportunity to register for desired courses may arise.
8. If you are a degree candidate and waitlisted for a course(s) needed to graduate, priority may be given to degree candidates on waitlists.
9. Waitlist positions may change due to degree candidates receiving priority for specific specialization courses.
10. It is advised to continue monitoring the courses you are interested in and/or the waitlists, and consider alternative courses if necessary.

Please check the closest references: [\[1\]](#) [\[2\]](#) [\[3\]](#)



Jiashen Cao 3 minutes ago

[@EvaDB](#) What are degree requirements?



EvaDB APP 2 minutes ago

Degree requirements are the specific criteria or conditions that students must fulfill in order to successfully complete a degree program. In this case, the document mentions that students must complete 30 credit hours (10 total courses) for the degree. Additionally, it states that students must complete the degree within six years as per the Institute's policy.

Please check the closest references: [\[1\]](#) [\[2\]](#)



Jiashen Cao 1 minute ago

[@EvaDB](#) When will the class registration start and end?



EvaDB APP 1 minute ago

Registration for classes starts on August 14 and ends on August 25 at 4:00pm ET.

Please check the closest references: [\[1\]](#) [\[2\]](#) [\[3\]](#)



Jiashen Cao < 1 minute ago

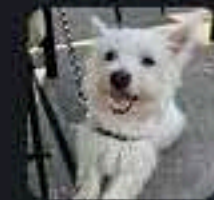
[@EvaDB](#) Why do I have Immunization hold?



EvaDB APP < 1 minute ago

If you have an Immunization hold, it means that you have not provided proof of immunization or have not completed the necessary waiver form. To resolve this hold and be able to register for classes, you need to send an email to immunizations@health.gatech.edu and request a Waiver Request Form. Once the waiver is submitted, it will be valid for one year from the date it is signed. Distance learners are also required to complete the yearly waiver, even though they do not need to provide proof of immunization. If you have any further questions or need clarification, you can contact immunizations@health.gatech.edu or call [404.894.1432](tel:404.894.1432).

Please check the closest references: [\[1\]](#) [\[2\]](#)



Jiashen Cao 2 minutes ago

[@EvaDB](#) Is withdrawing from a class going to affect my GPA?



EvaDB APP 2 minutes ago

If you withdraw from a class, it will not impact your GPA. The transcript will show a "W" for the withdrawn course, but it does not factor into your GPA calculation.

Please check the closest references: [\[1\]](#) [\[2\]](#)