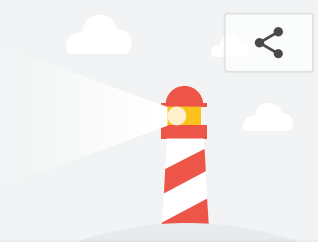


<https://cra-base-test.firebaseio.com/>

Dec 1, 2018, 11:00 AM PST

Emulated Nexus 5X, Simulated Slow 4G network



Performance



Progressive Web App



Accessibility



Best Practices



SEO

Score scale: ● 90-100 ● 50-89 ● 0-49

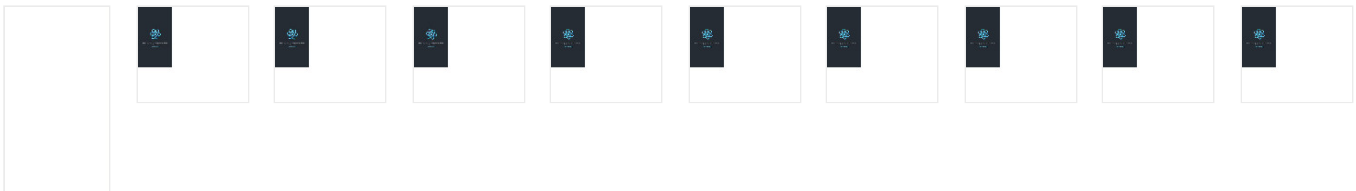
Performance



Metrics

First Contentful Paint	1.0 s ✓	First Meaningful Paint	1.0 s ✓
Speed Index	1.5 s ✓	First CPU Idle	1.0 s ✓
Time to Interactive	1.0 s ✓	Estimated Input Latency	10 ms ✓

Values are estimated and may vary.



Diagnostics

More information about the performance of your application.

- 1 Serve static assets with an efficient cache policy 4 resources found ⓘ
- 2 Minimize Critical Requests Depth 3 chains found
- ✓ Passed audits 20 audits

Progressive Web App



These checks validate the aspects of a Progressive Web App. [Learn more.](#)

Fast and reliable

- 1 Page load is fast enough on mobile networks ✓
- 2 Current page responds with a 200 when offline ✓

3 start_url responds with a 200 when offline



Installable

4 Uses HTTPS



5 Registers a service worker



6 User can be prompted to Install the Web App



PWA Optimized

7 Redirects HTTP traffic to HTTPS



8 Configured for a custom splash screen



9 Sets an address-bar theme color



10 Content is sized correctly for the viewport



11 Has a <meta name="viewport"> tag with width or initial-scale



12 Contains some content when JavaScript is not available



Additional items to manually check

3 audits

Accessibility



These checks highlight opportunities to [improve the accessibility of your web app](#). Only a subset of accessibility issues can be automatically detected so manual testing is also encouraged.

Additional items to manually check

11 audits

Passed audits

9 audits

Not applicable

26 audits

Best Practices



Passed audits

15 audits

SEO



These checks ensure that your page is optimized for search engine results ranking. There are additional factors Lighthouse does not check that may affect your search ranking. [Learn more](#).

Additional items to manually check

2 audits

Passed audits

10 audits

Not applicable

1 audits

Runtime settings

- **URL:** https://cra-base-test.firebaseio.com/
- **Fetch time:** Dec 1, 2018, 11:00 AM PST
- **Device:** Emulated Nexus 5X
- **Network throttling:** 150 ms TCP RTT, 1,638.4 Kbps throughput (Simulated)
- **CPU throttling:** 4x slowdown (Simulated)
- **User agent (host):** Mozilla/5.0 (Macintosh; Intel Mac OS X 10_14_1) AppleWebKit/537.36 (KHTML, like Gecko) Chrome/70.0.3538.110 Safari/537.36
- **User agent (network):** Mozilla/5.0 (Linux; Android 6.0.1; Nexus 5 Build/MRA58N) AppleWebKit/537.36 (KHTML, like Gecko) Chrome/71.0.3559.0 Mobile Safari/537.36
- **CPU/Memory Power:** 1356

Generated by **Lighthouse** 4.0.0-alpha.1 | [File an issue](#)