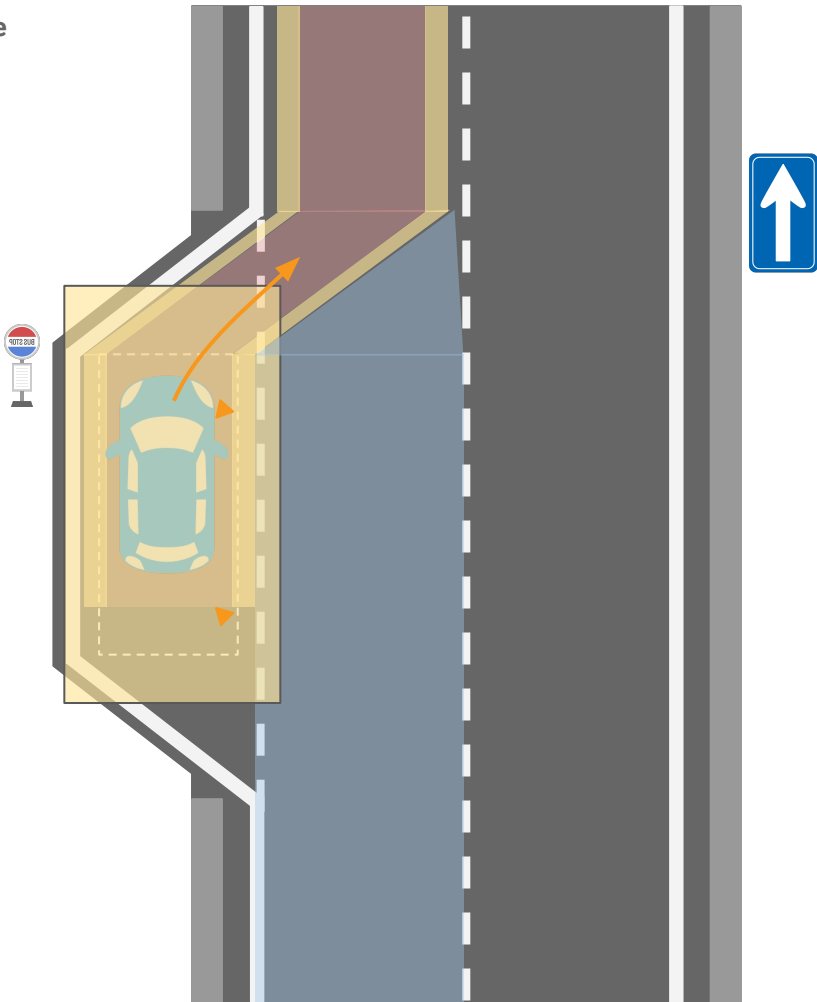


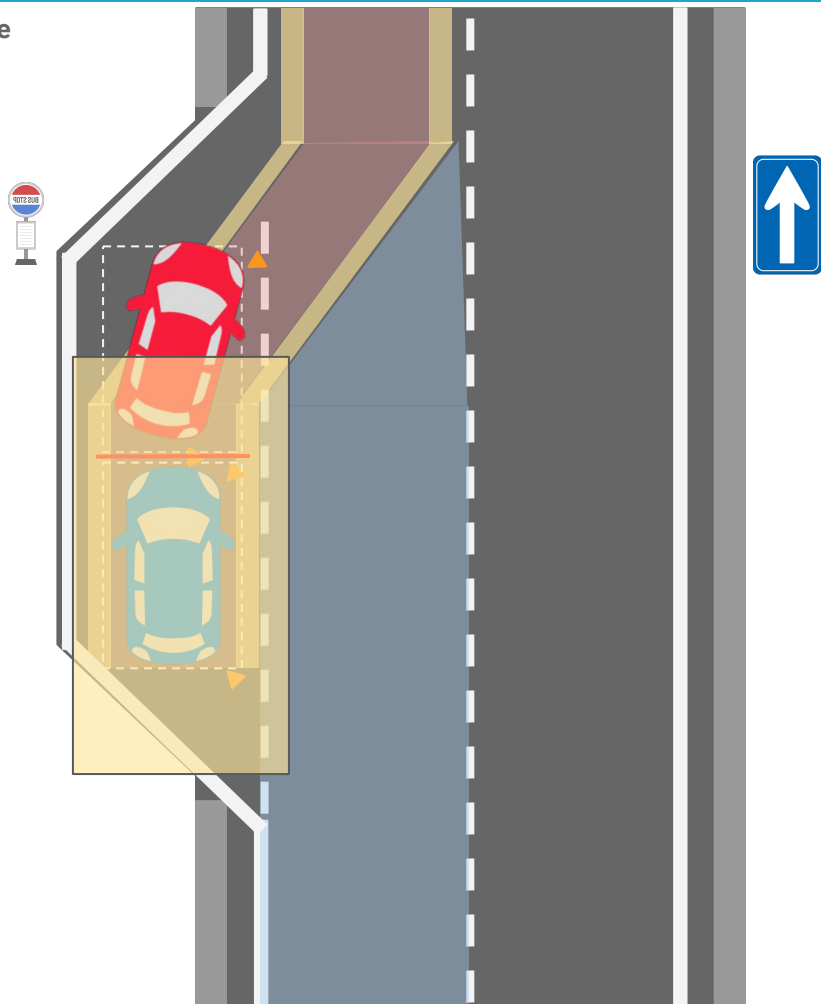


# UC-F Arrival/departure - 10: Departure

ODD Use Case Slide

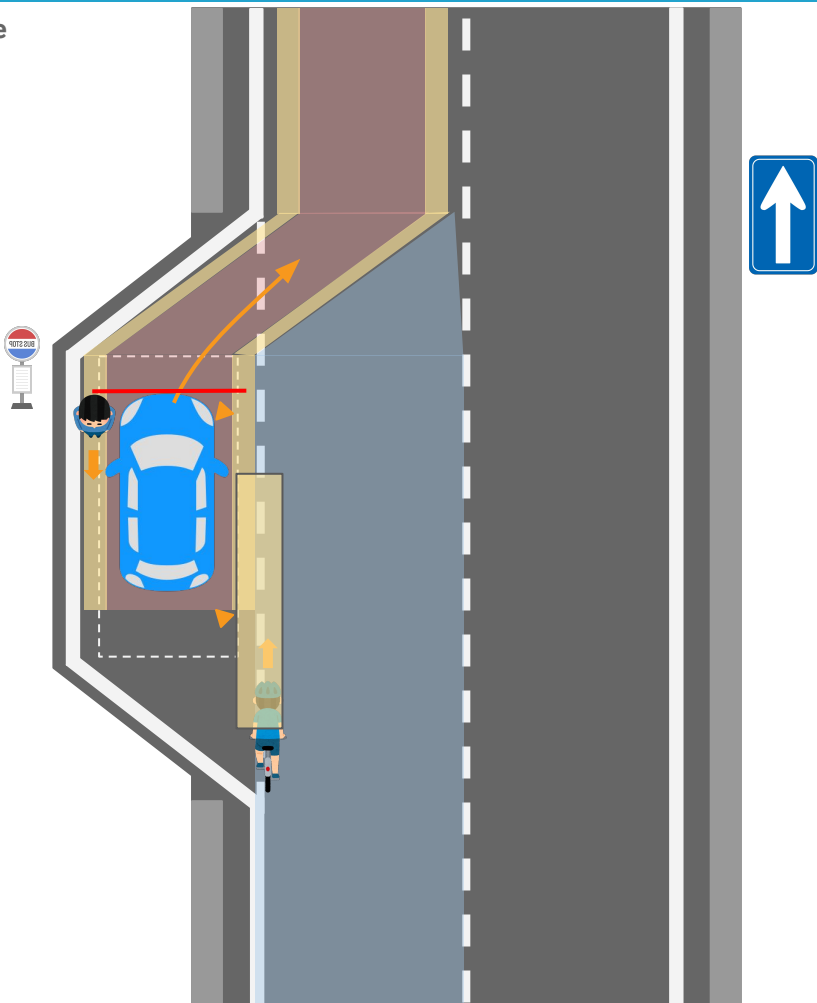
**Figure****Requirements**

- Check that there are no obstacles in front or around the vehicle (a vehicle in front etc). If there are no such obstacles, then depart.
- Relevant autoware nodes/modules (as of 2022/06/08)
  - surround obstacle checker

**Figure****Requirements**

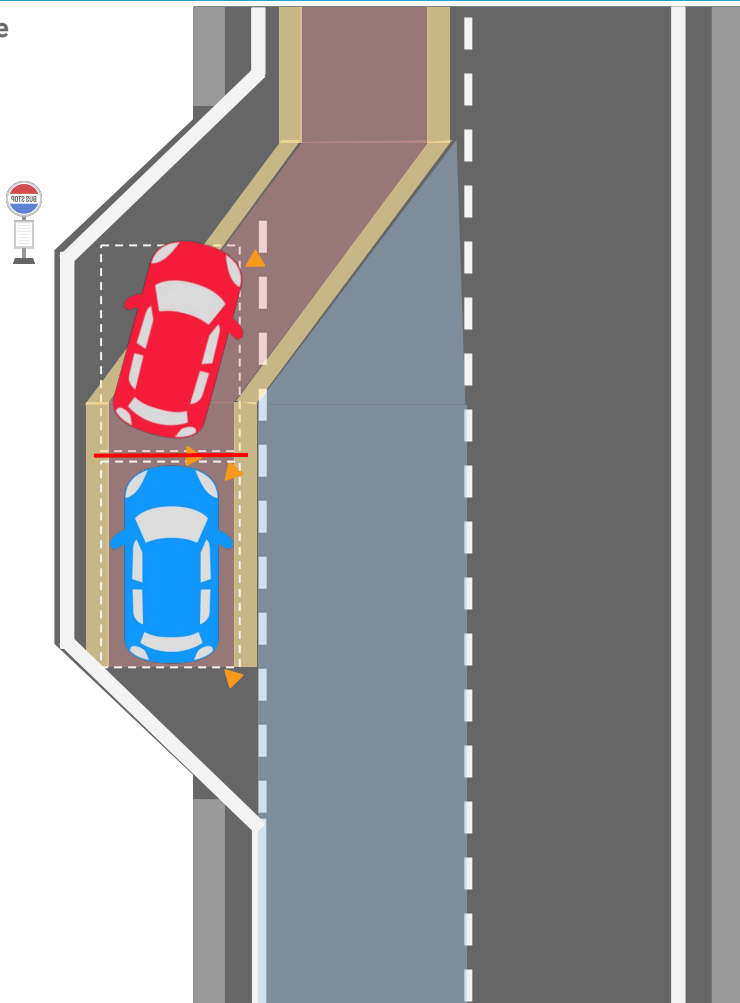
- If there is a vehicle in front, check that the vehicle is not moving off, and then depart.
- Autoware modules used:
  - surround obstacle checker
  - obstacle stop planner

Figure

**Requirements**

- If there are any obstacles in front of or around the vehicle, departure will be interrupted.
  - Check that there are no remaining obstacles in front of or around the vehicle, then resume departure
- Autoware modules used:
  - surround obstacle checker
  - blindspot

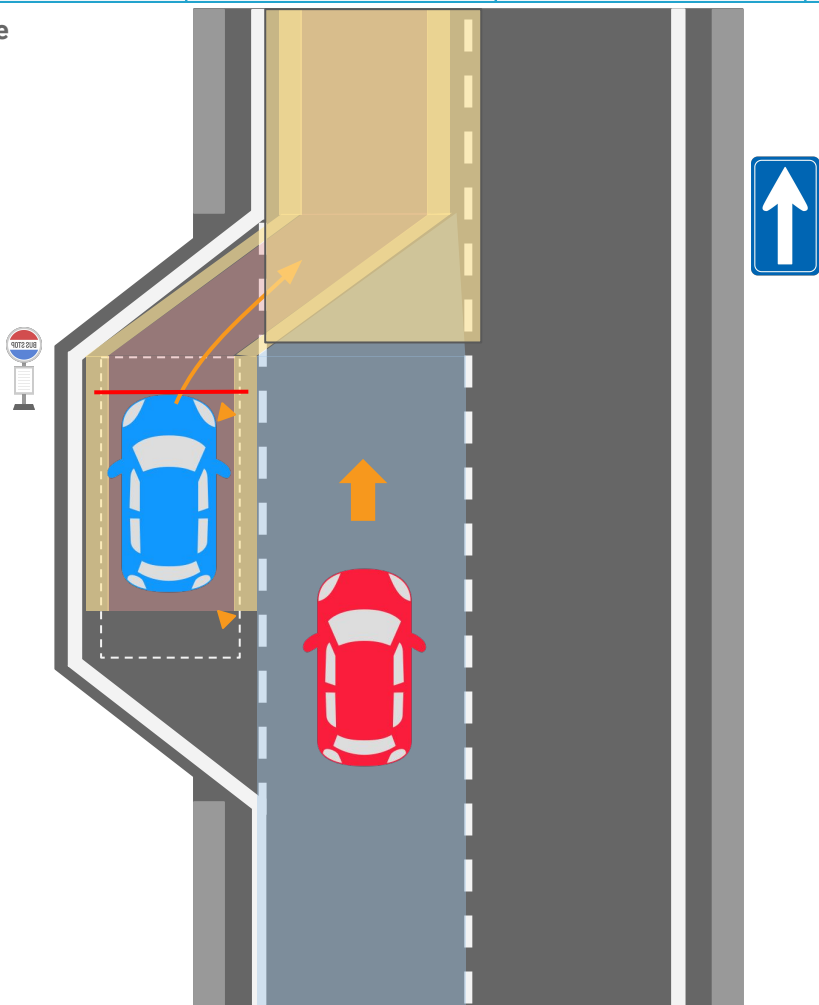
**Figure**



**Requirements**

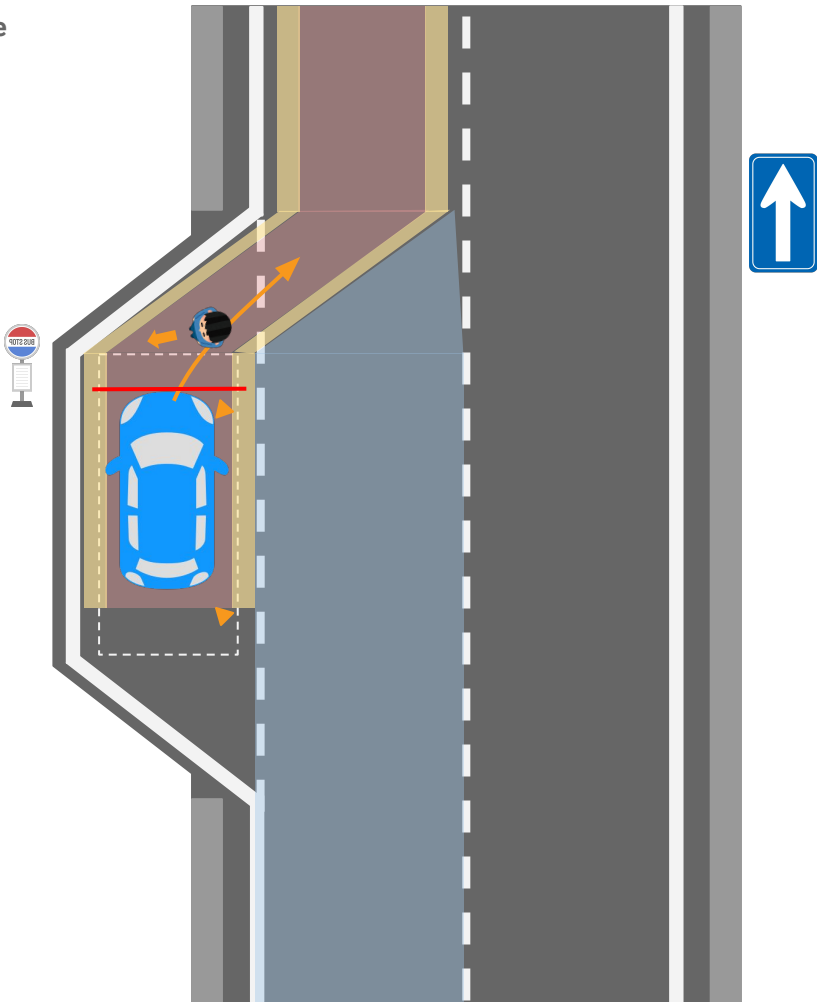
- If there is a vehicle in front, check that the vehicle is not moving off, and then depart.

Same as UC-F-10-00002 ?

**Figure****Requirements**

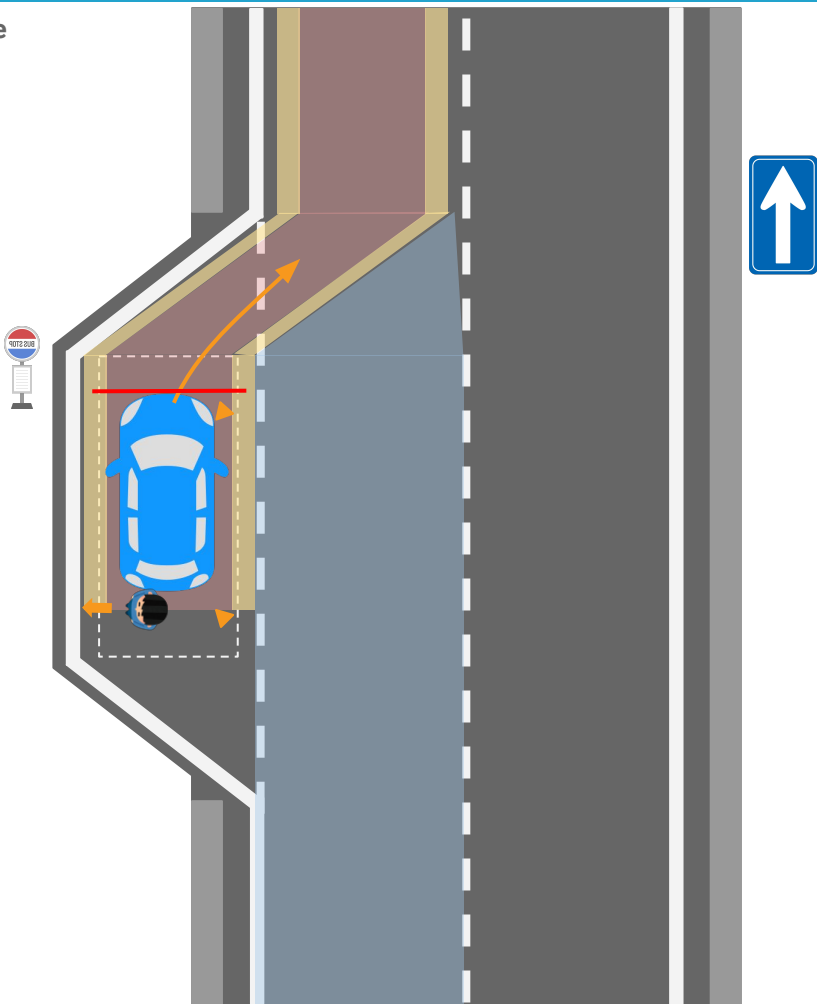
- When departing, if a vehicle is travelling from the rear in the nearside lane, departure will be interrupted.
  - After confirming there are no vehicle travelling from the rear in the nearside lane, departure will resume.
- Autoware modules used:
  - intersection

Figure

**Requirements**

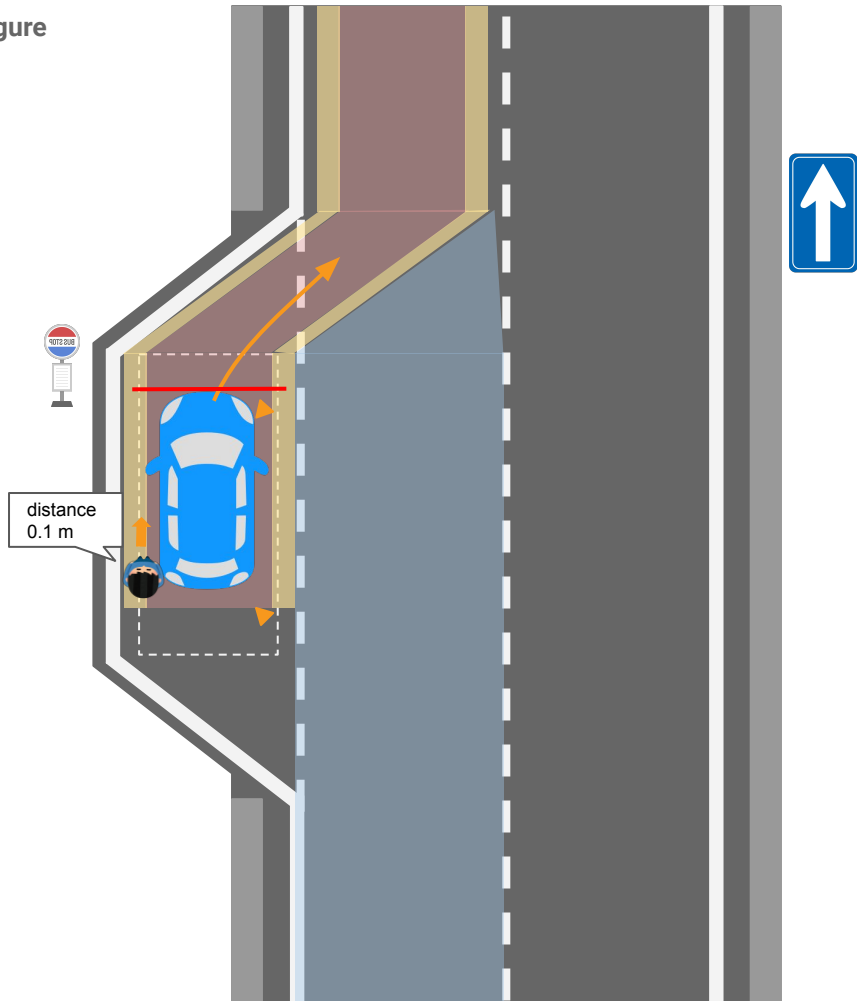
- If there are any obstacles in front of or around the vehicle, departure will be interrupted.
  - Check that there are no remaining obstacles in front of or around the vehicle, then resume departure

Figure

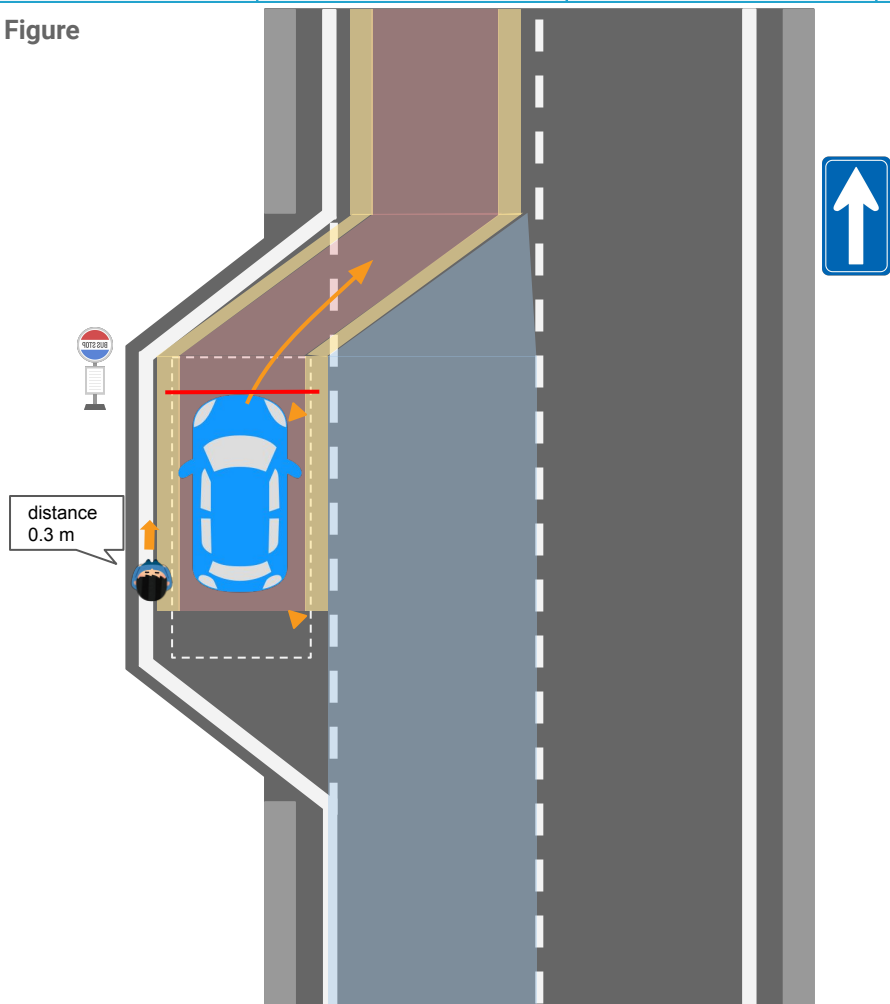
**Requirements**

- If there are any obstacles in front of or around the vehicle, departure will be interrupted.
  - Check that there are no remaining obstacles in front of or around the vehicle, then resume departure

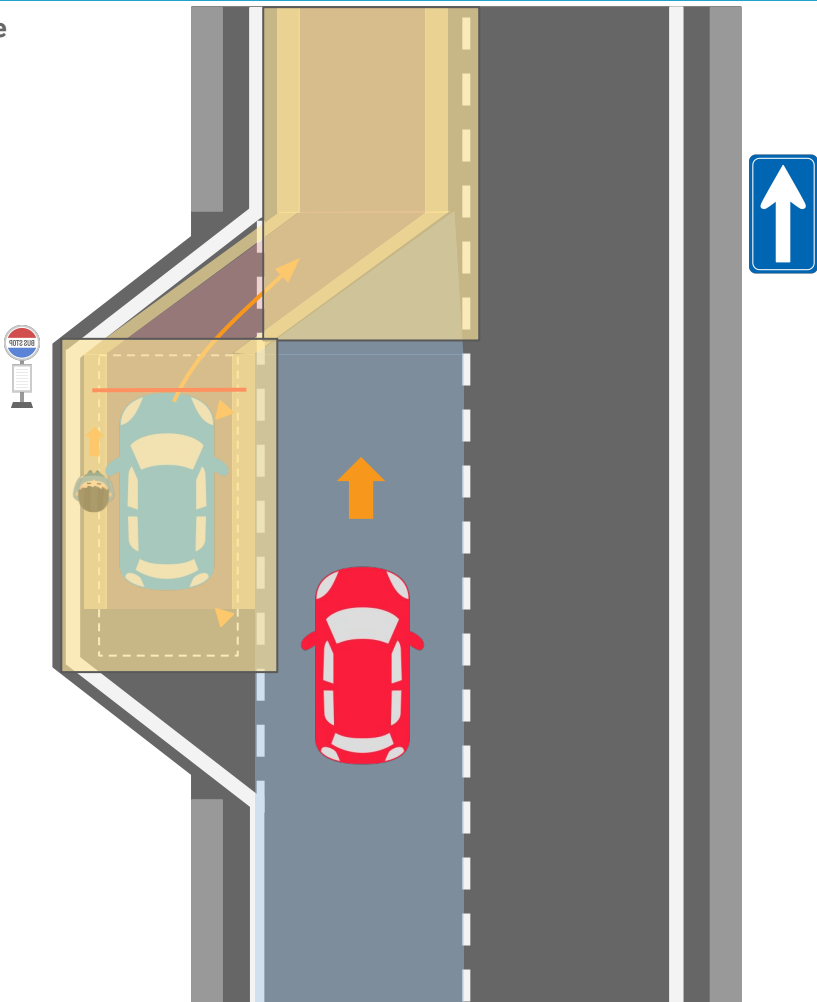


**Figure****Requirements**

- If there are any obstacles in front of or around the vehicle, departure will be interrupted.
  - Check that there are no remaining obstacles in front of or around the vehicle, then resume departure

**Figure****Requirements**

- If there are any obstacles in front of or around the vehicle, departure will be interrupted.
  - Check that there are no remaining obstacles in front of or around the vehicle, then resume departure

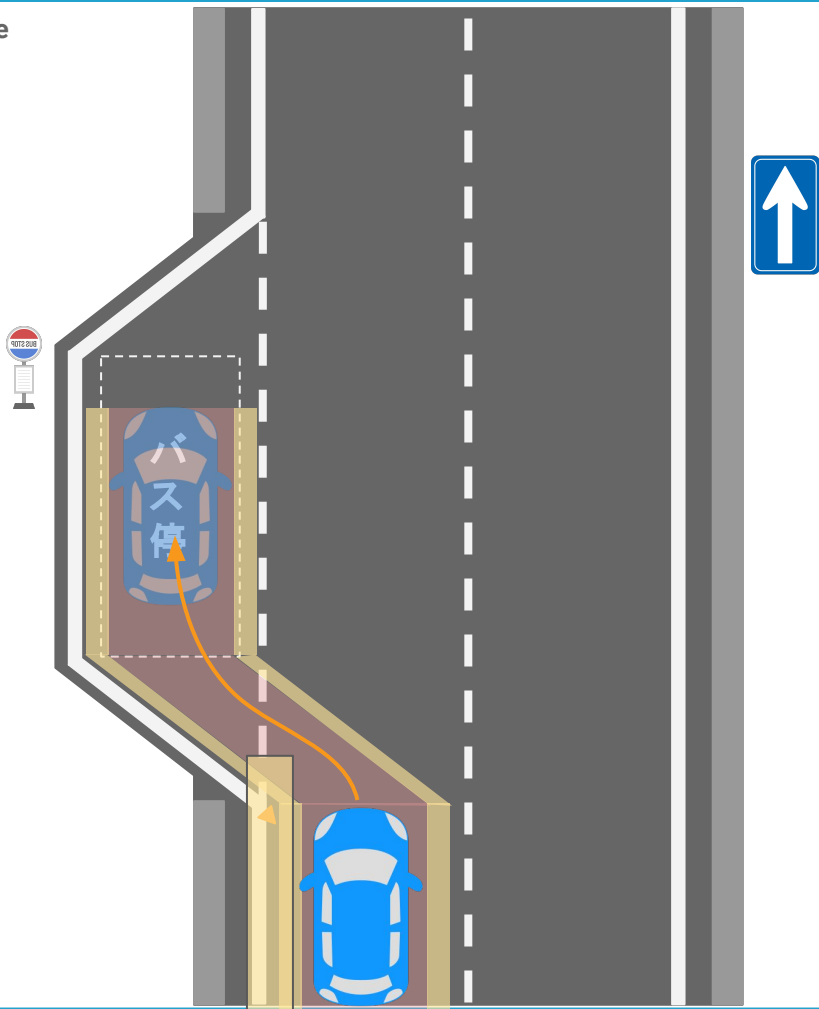
**Figure****Requirements**

- When departing, if a vehicle is travelling from the rear in the nearside lane, departure will be interrupted.
  - After confirming there are no vehicle travelling from the rear in the nearside lane, departure will resume.
- If there are any obstacles in front of or around the vehicle, departure will be interrupted.
  - Check that there are no remaining obstacles in front of or around the vehicle, then resume departure.
- Autoware modules used:
  - surround obstacle checker
  - intersection

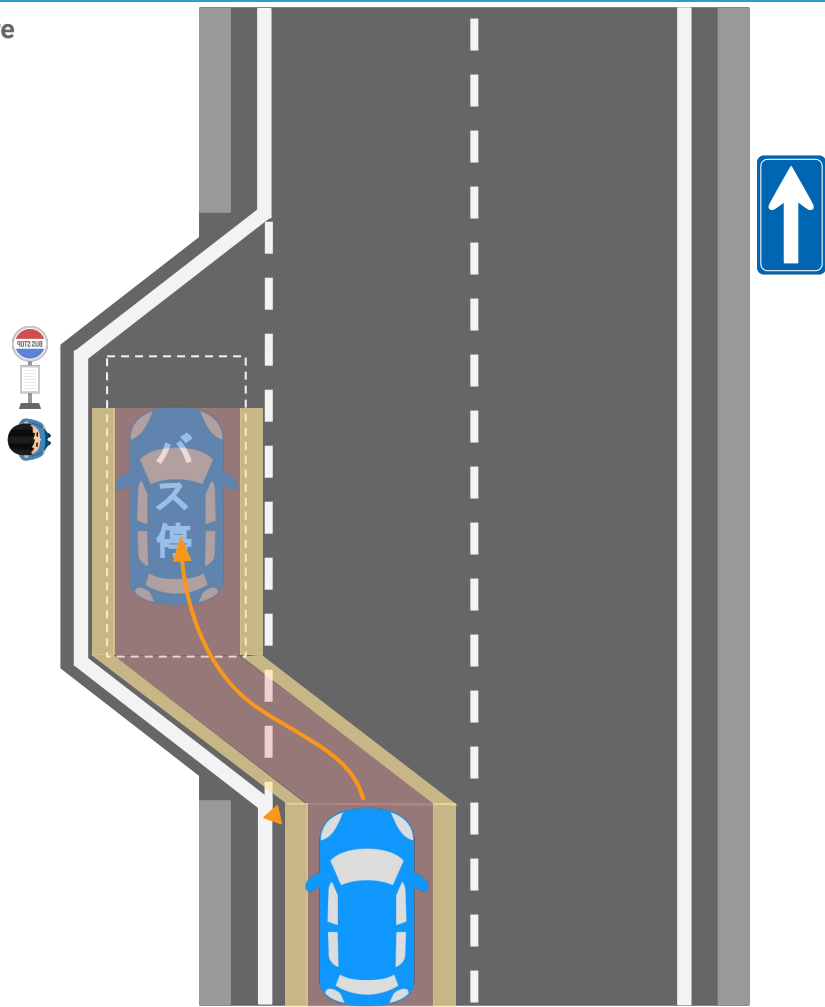


# UC-F Arrival/departure - 11: Stopping

ODD Use Case Slide

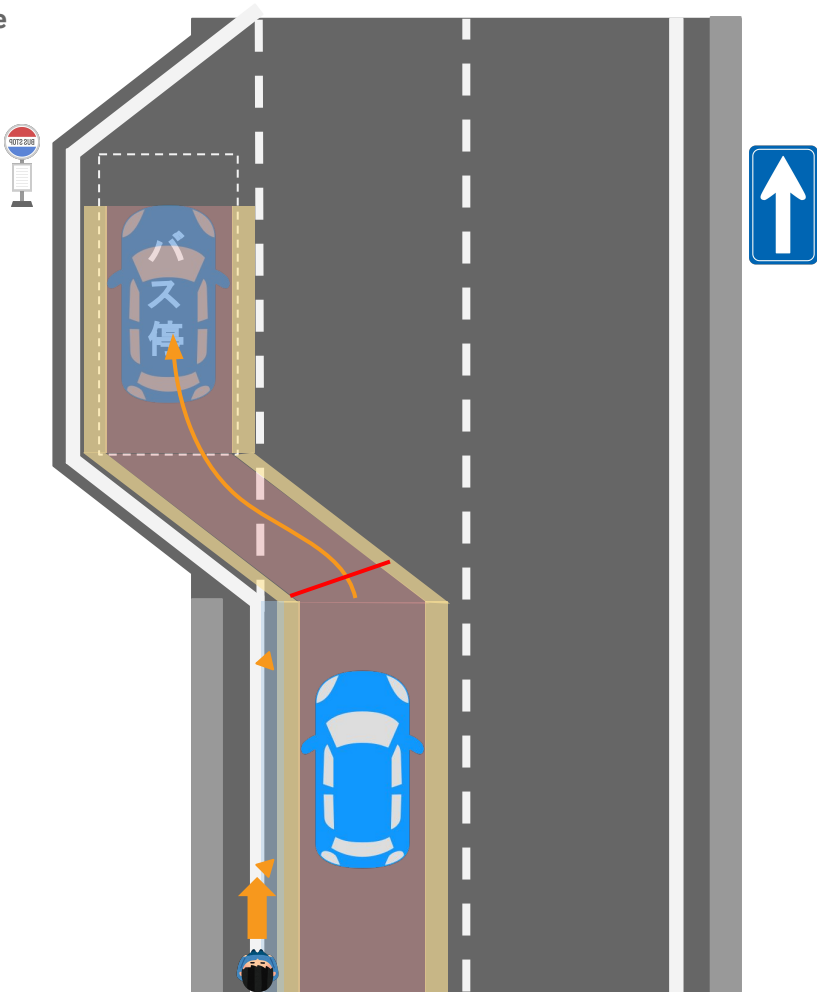
**Figure****Requirements**

- If there are no obstacles on the route to the stop position, drive to the stop position and stop.
  - Even if an object is detected in the rear-left when checking for potential collisions, if there is no danger of collision then drive to the stop position without slowing down

**Figure****Requirements**

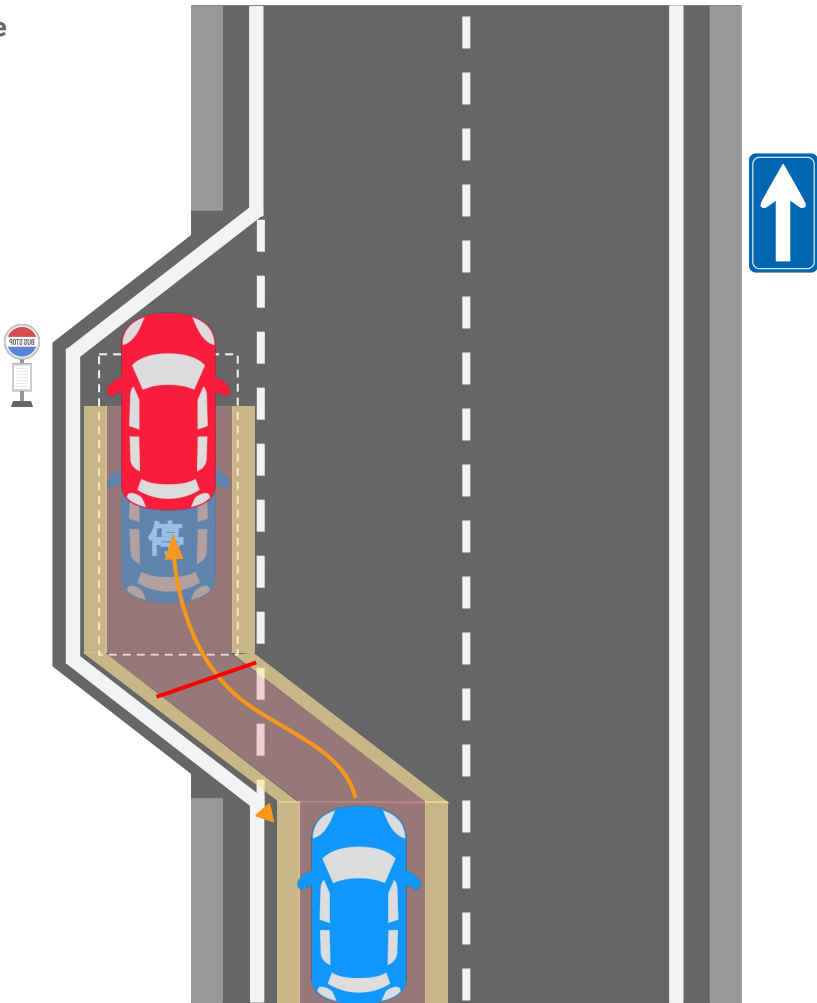
- If there are no obstacles on the route to the stop position, drive to the stop position and stop.
  - Even if an object is detected in the rear-left when checking for potential collisions, if there is no danger of actual collision then drive to the stop position without slowing down
  - If there is an object that may jump into the road (eg: a pedestrian near the stop position), drive slowly to the stop position

Figure

**Requirements**

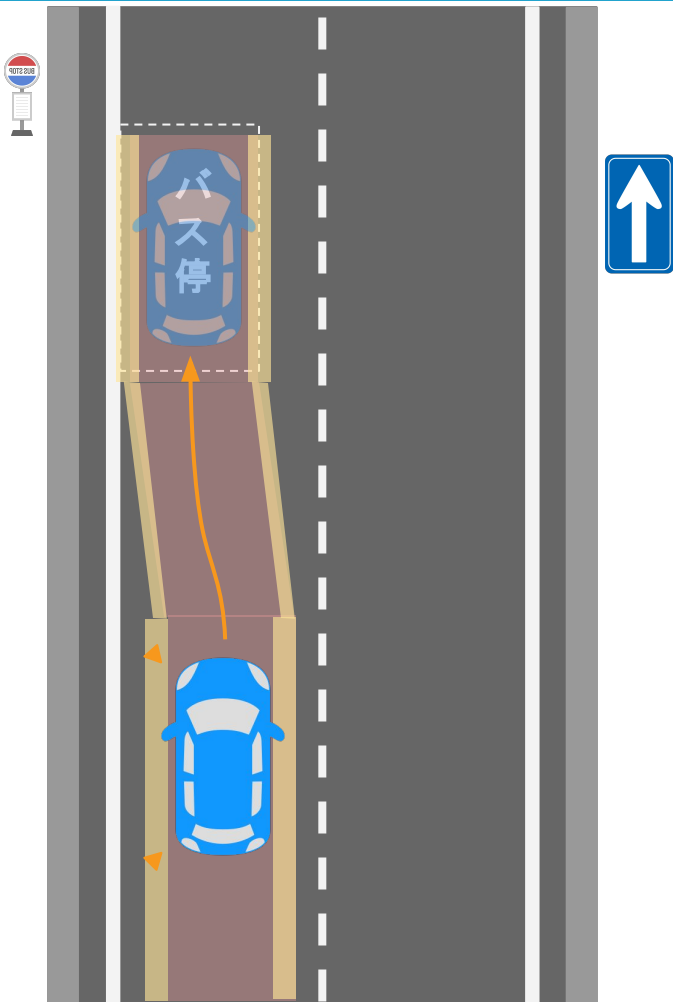
- If there are no obstacles on the route to the stop position, drive to the stop position and stop.
- If an object is detected in the rear-left when checking for potential collisions and there is a risk collision then stop until safety has been confirmed

Figure

**Requirements**

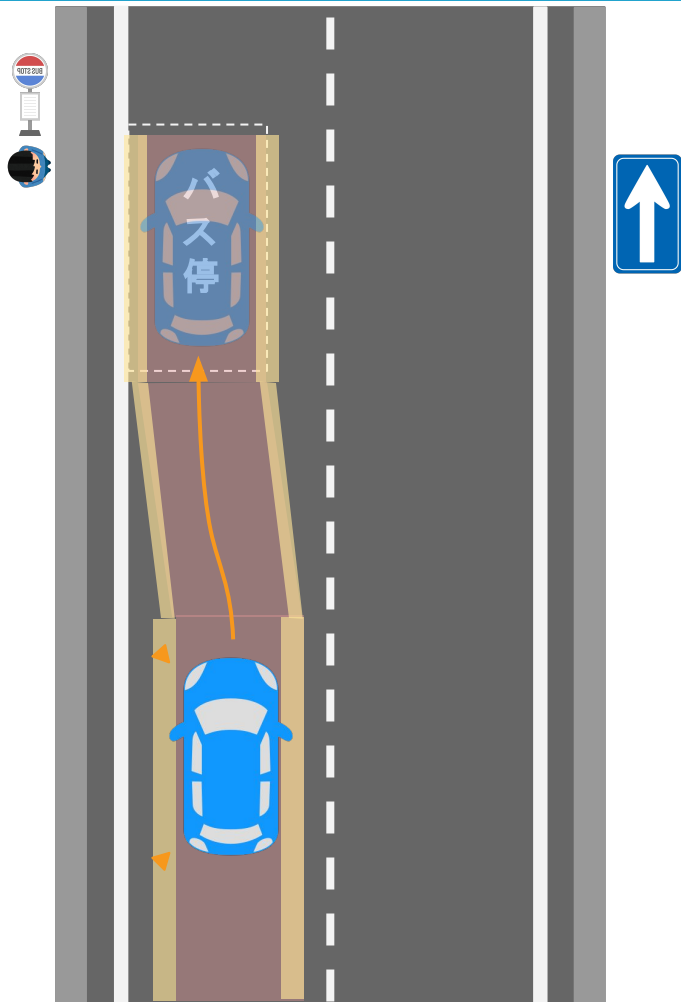
- If there are no obstacles on the route to the stop position, drive to the stop position and stop.
  - If the stop position is blocked by an obstacle, stop before the obstacle and wait until it is gone before resuming driving until the stop position



**Figure****Requirements**

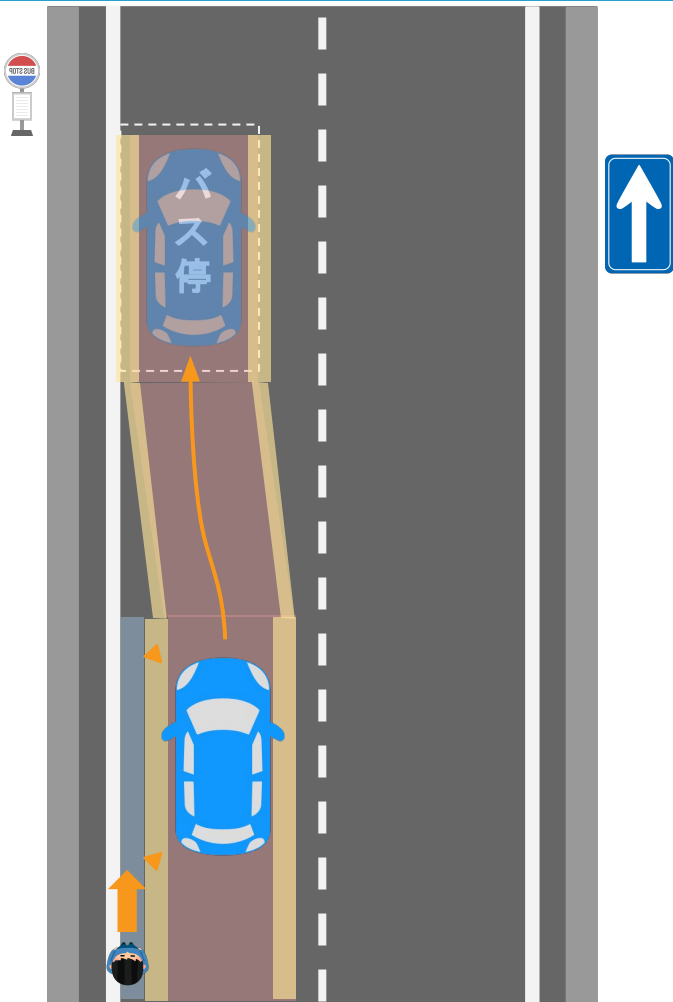
- If there are no obstacles on the route to the stop position, drive to the stop position and stop.
  - Even if an object is detected in the rear-left when checking for potential collisions, if there is no danger of actual collision then drive to the stop position without slowing down

## Figure



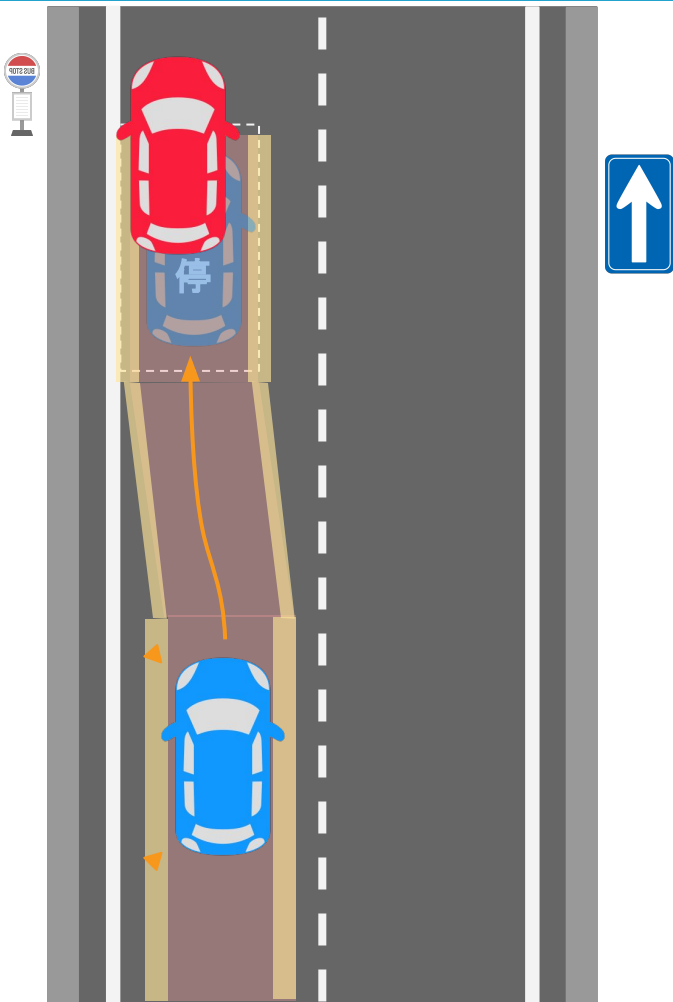
## Requirements

- If there are no obstacles on the route to the stop position, drive to the stop position and stop.
  - Even if an object is detected in the rear-left when checking for potential collisions, if there is no danger of actual collision then drive to the stop position without slowing down
  - If there is an object that may jump into the road (eg: a pedestrian near the stop position), drive slowly to the stop position

**Figure****Requirements**

- If there are no obstacles on the route to the stop position, drive to the stop position and stop.
  - If an object is detected in the rear-left when checking for potential collisions and there is a risk collision then stop until safety has been confirmed

Figure

**Requirements**

- If there are no obstacles on the route to the stop position, drive to the stop position and stop.
  - If the stop position is blocked by an obstacle, stop before the obstacle and wait until it is gone before resuming driving until the stop position